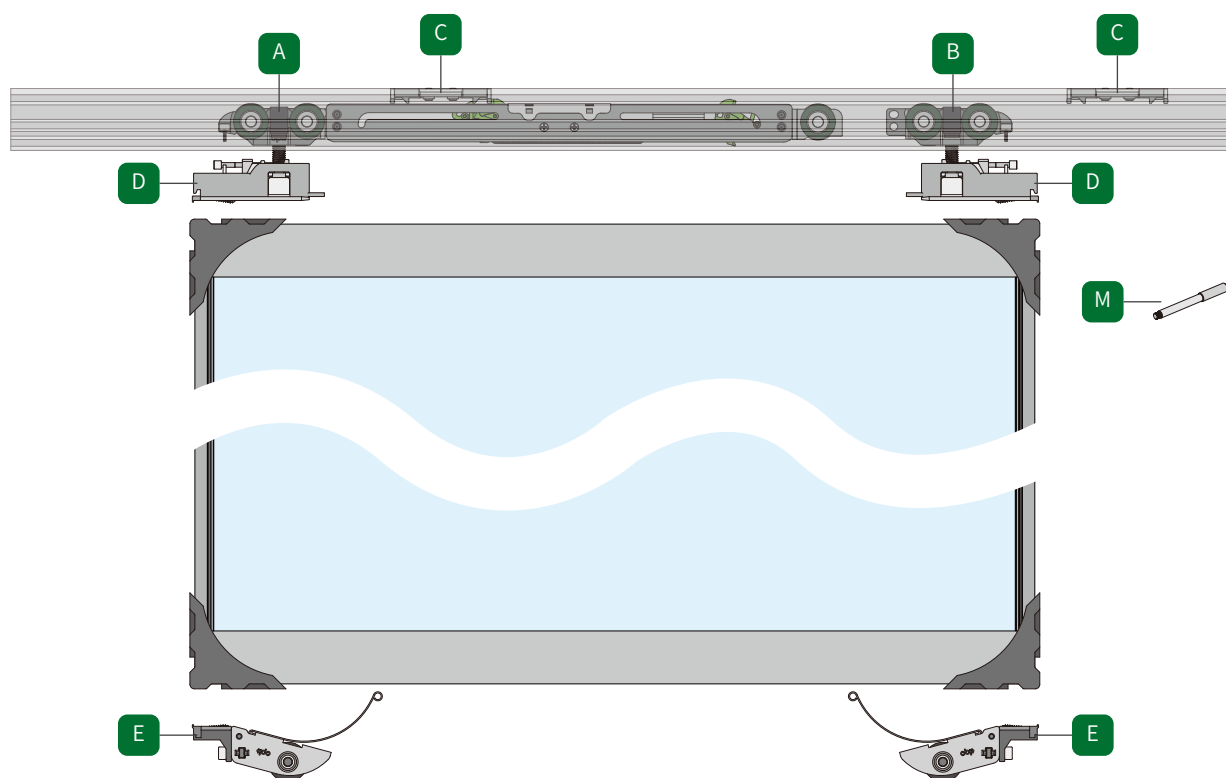
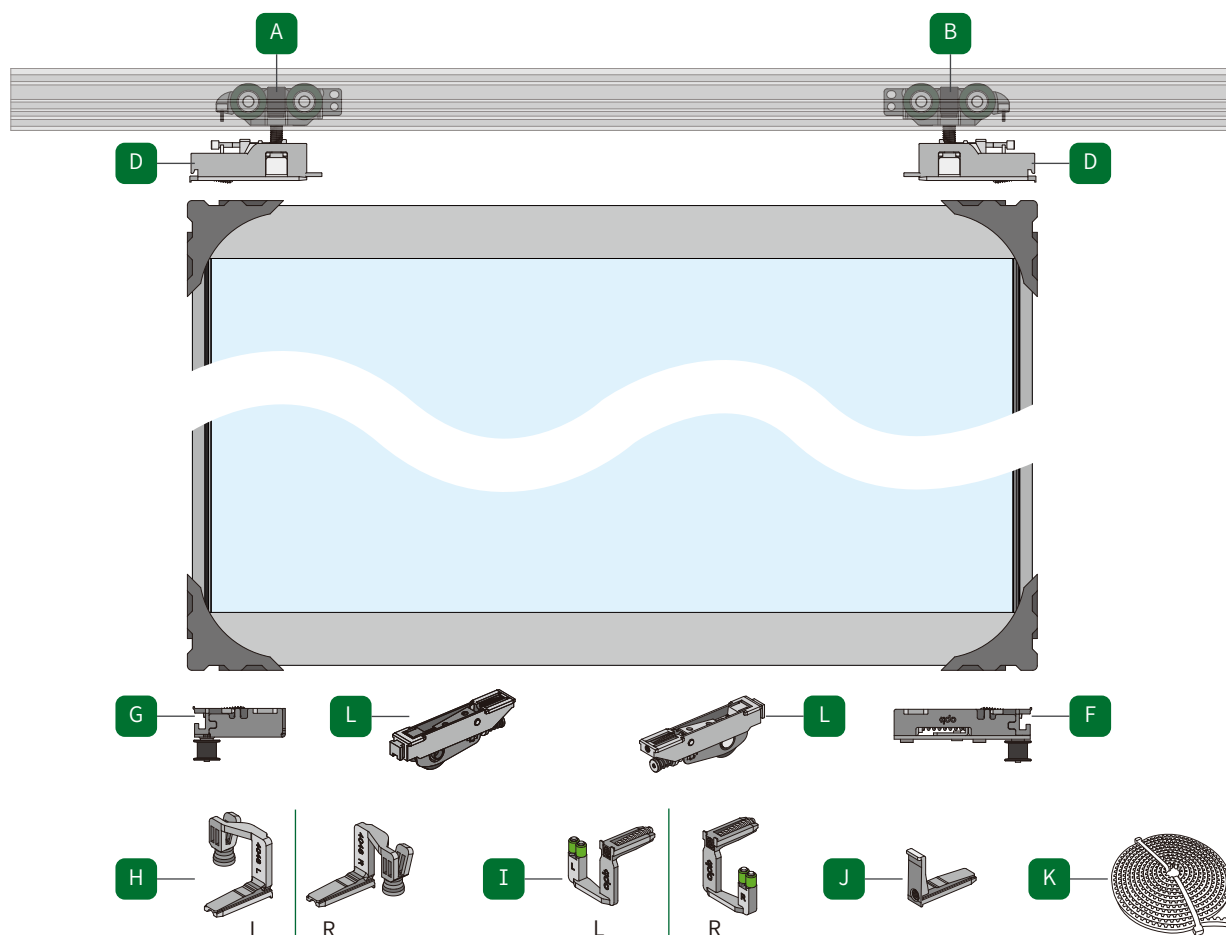


# opk Perfect Slim System Multiple Doors (≥ 4 doors) Mounting Instruction

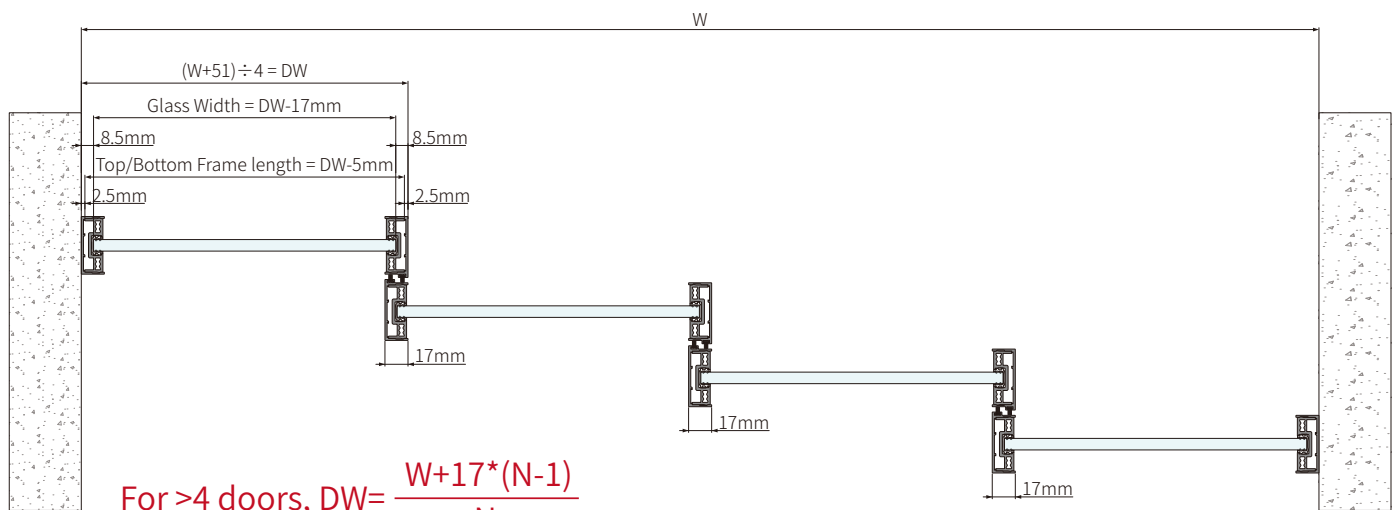
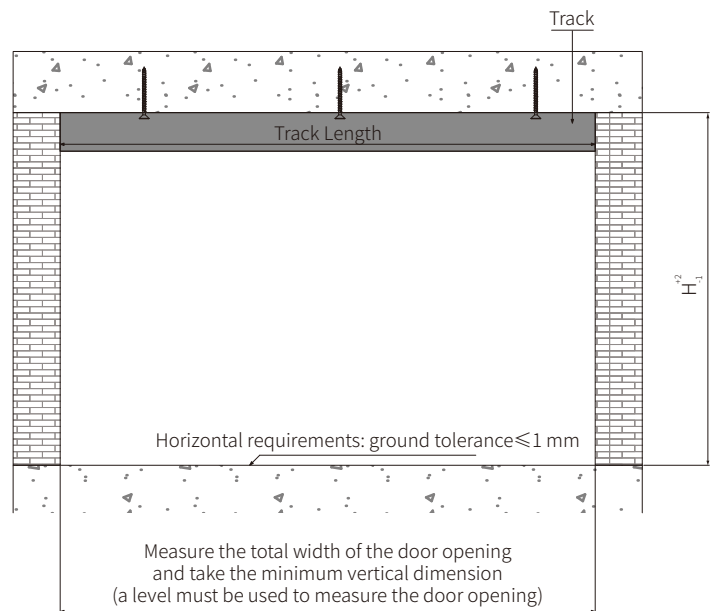
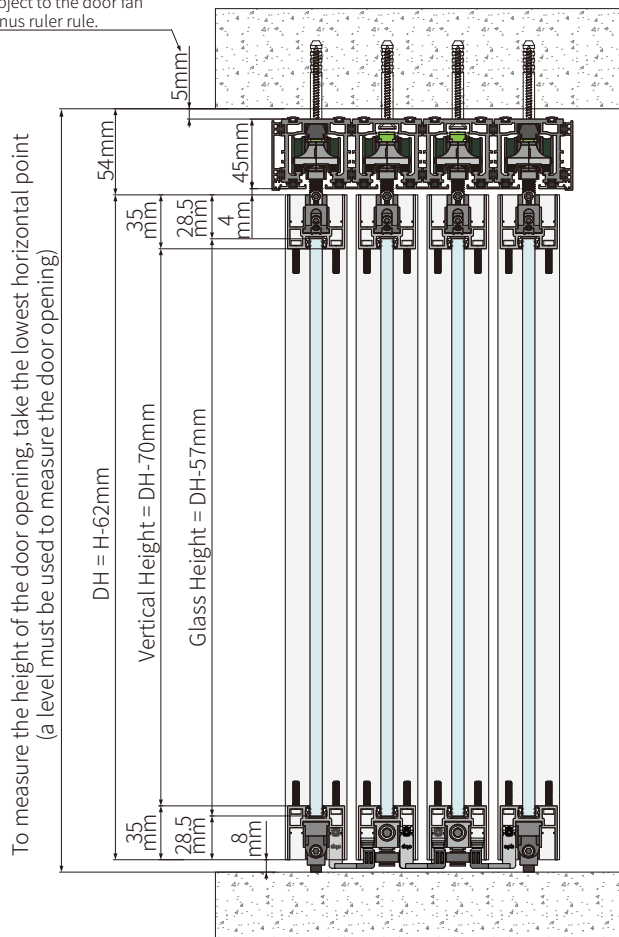
## Single Door 1 & 2



## Middle Door 1 & 2



This 5mm space is used to adjust the track level. The installation size is subject to the door fan minus ruler rule.



$$\text{For } >4 \text{ doors, } DW = \frac{W + 17 \cdot (N - 1)}{N}$$

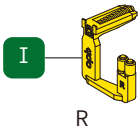
N: Door panel quantity



## 4 Doors (Left Opening) Accessories Diagram

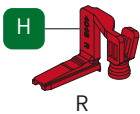


Choose Accessory Orientation



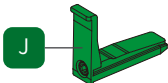
R

Connector



R

Anti-push pull piece



After the door panel is connected but the anti-push pull piece is not installed, do not push or pull the door panel.

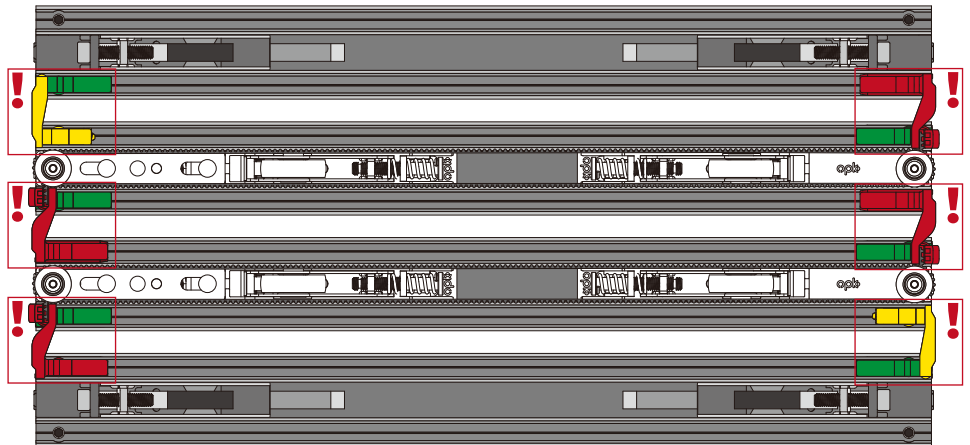
Single Door 2

Middle Door 2

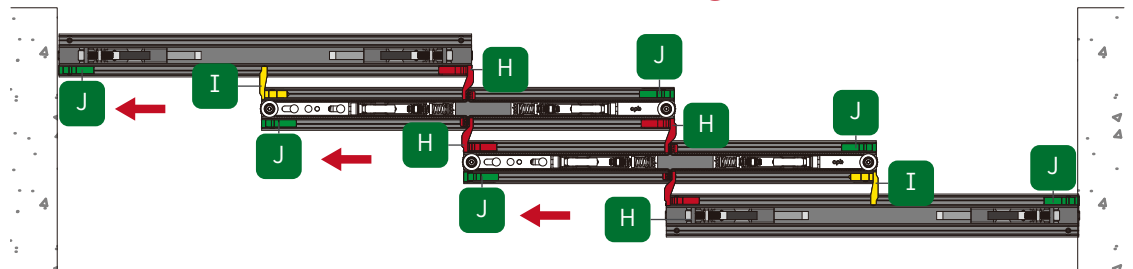
Middle Door 1

Single Door 1

View from bottom



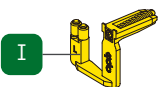
View from the bottom: Door opening to the left



## 4 Doors (Right Opening) Accessories Diagram

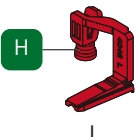


Choose Accessory Orientation



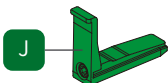
L

Connector



L

Anti-push pull piece



After the door panel is connected but the anti-push pull piece is not installed, do not push or pull the door panel.

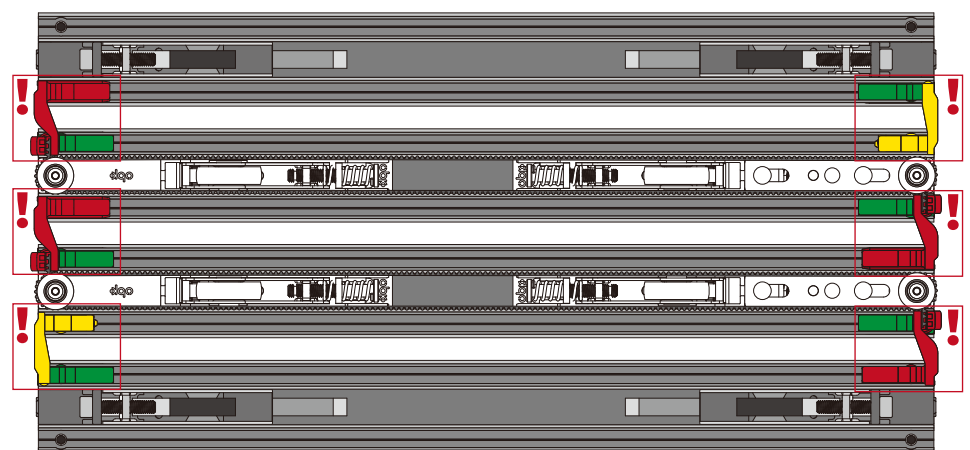
Single Door 2

Middle Door 2

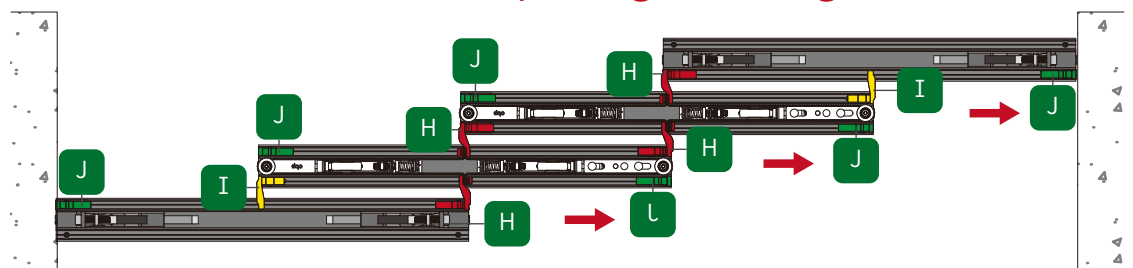
Middle Door 1

Single Door 1

View from bottom

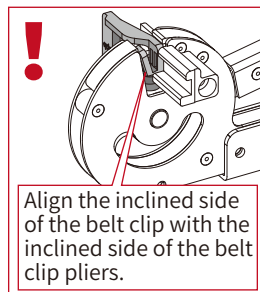
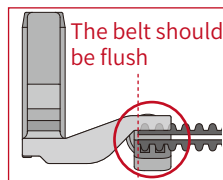
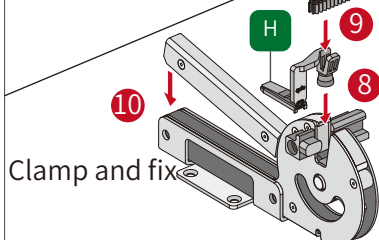
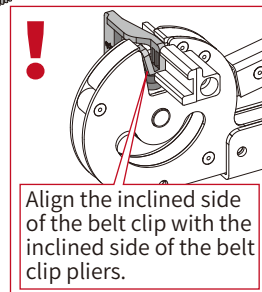
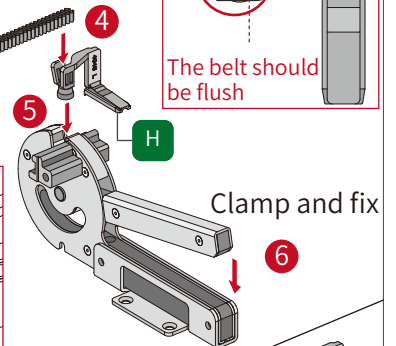
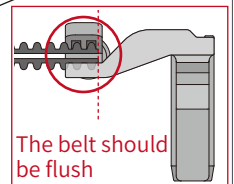
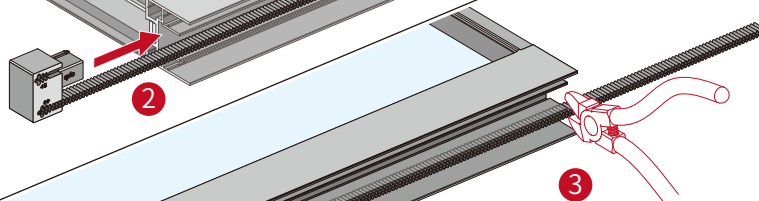
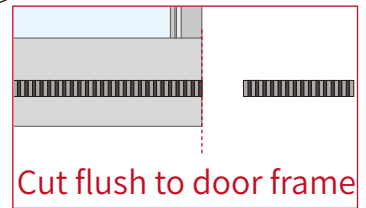
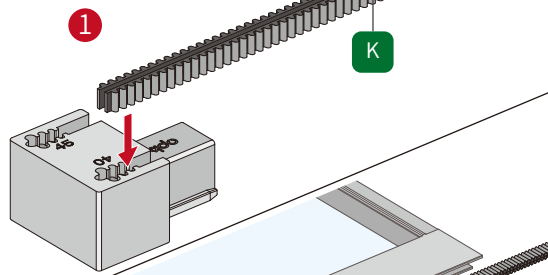
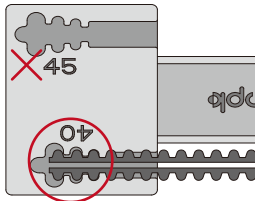


View from bottom: Door opening to the right

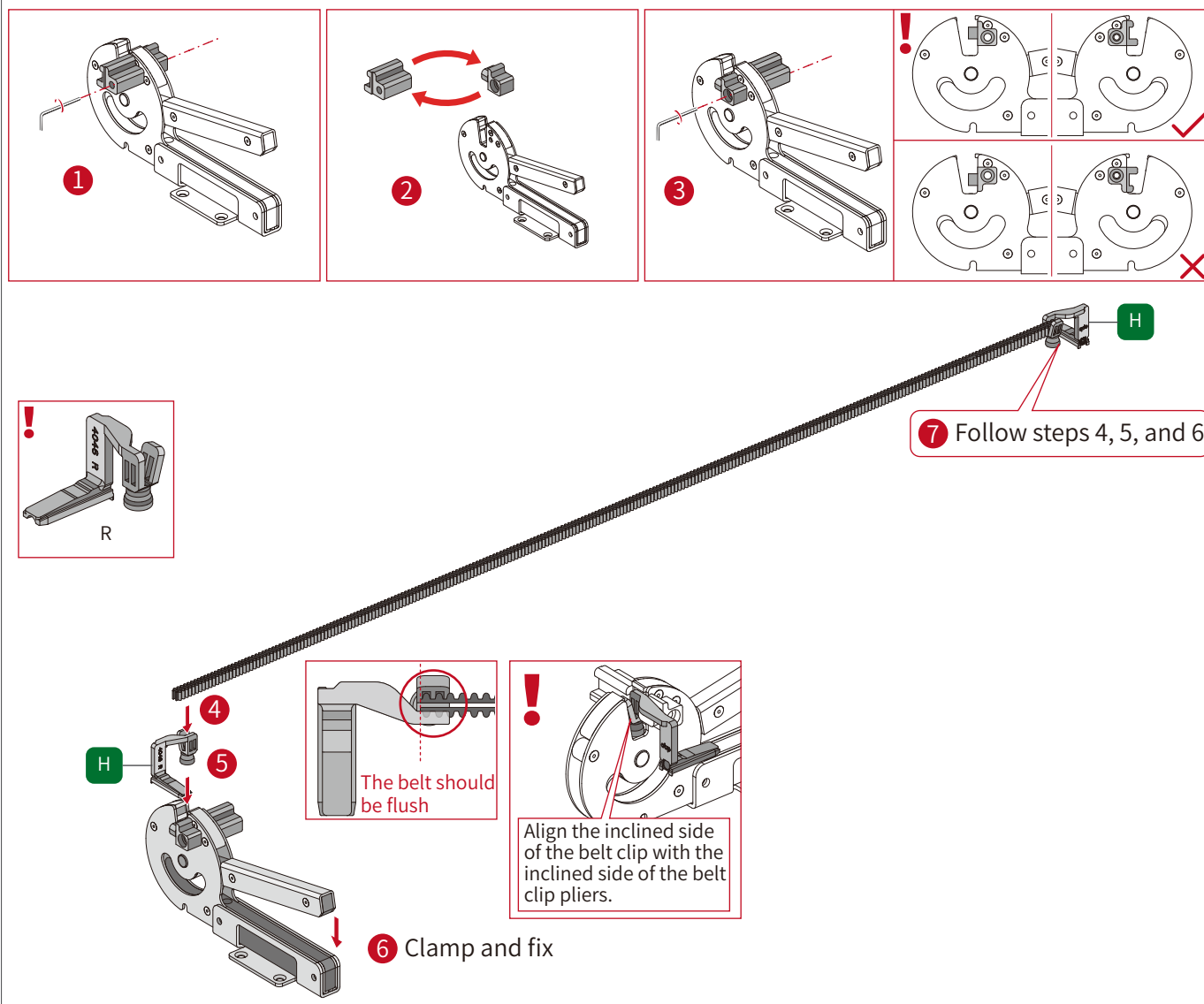


# 1 Cut Belt Install Belt Accessories

According to the width of the top and bottom horizontal profiles of the door panel, use of belt molds 40



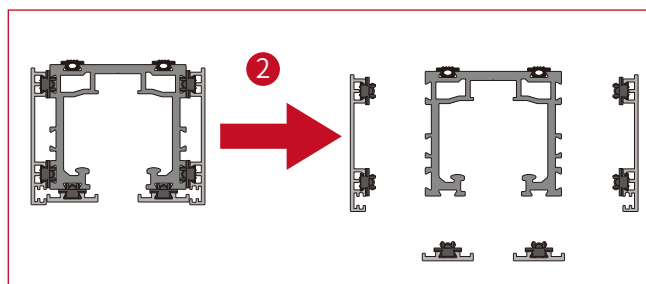
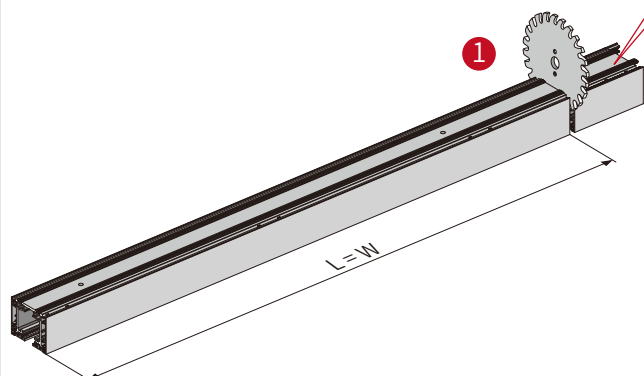
## When Opening the Door to the Left, the Locking Pliers for the Belt Must Change Positions



## 2-1 Cut the Profiles Disassemble the Profiles

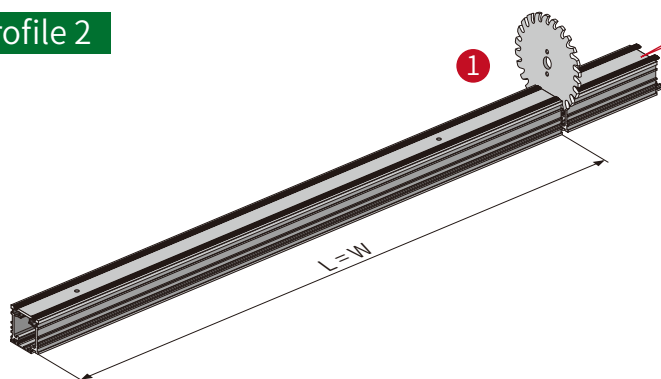
### Profile 2

! Cutting from the uneven side of the profiles

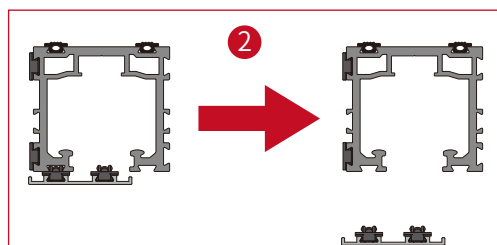


## 2-2 Cut the Profiles Disassemble the Profiles

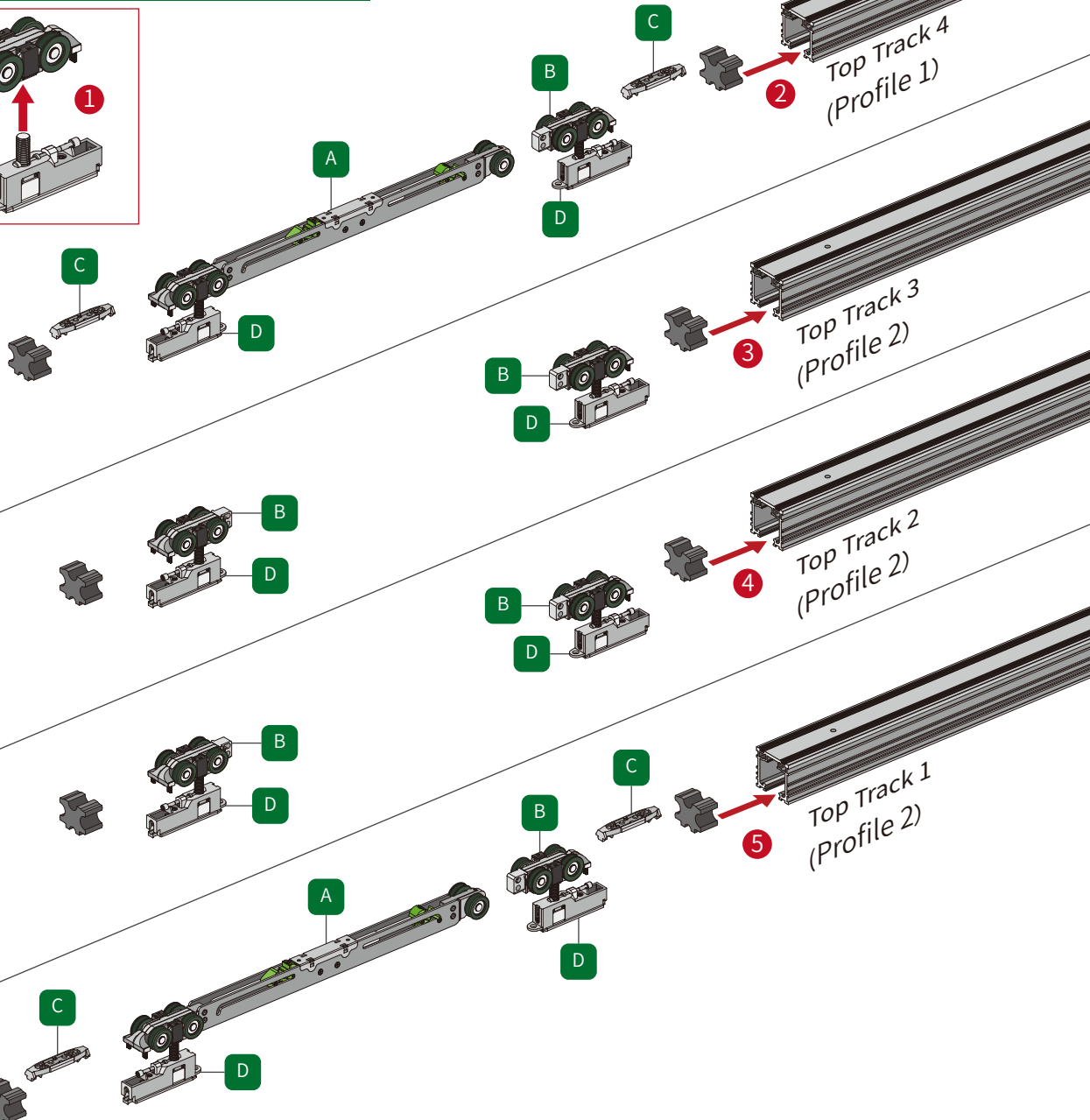
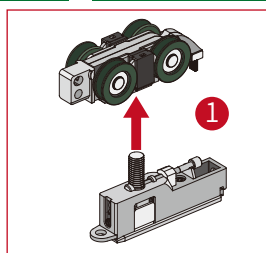
### Profile 2



! Cutting from the uneven side of the profiles

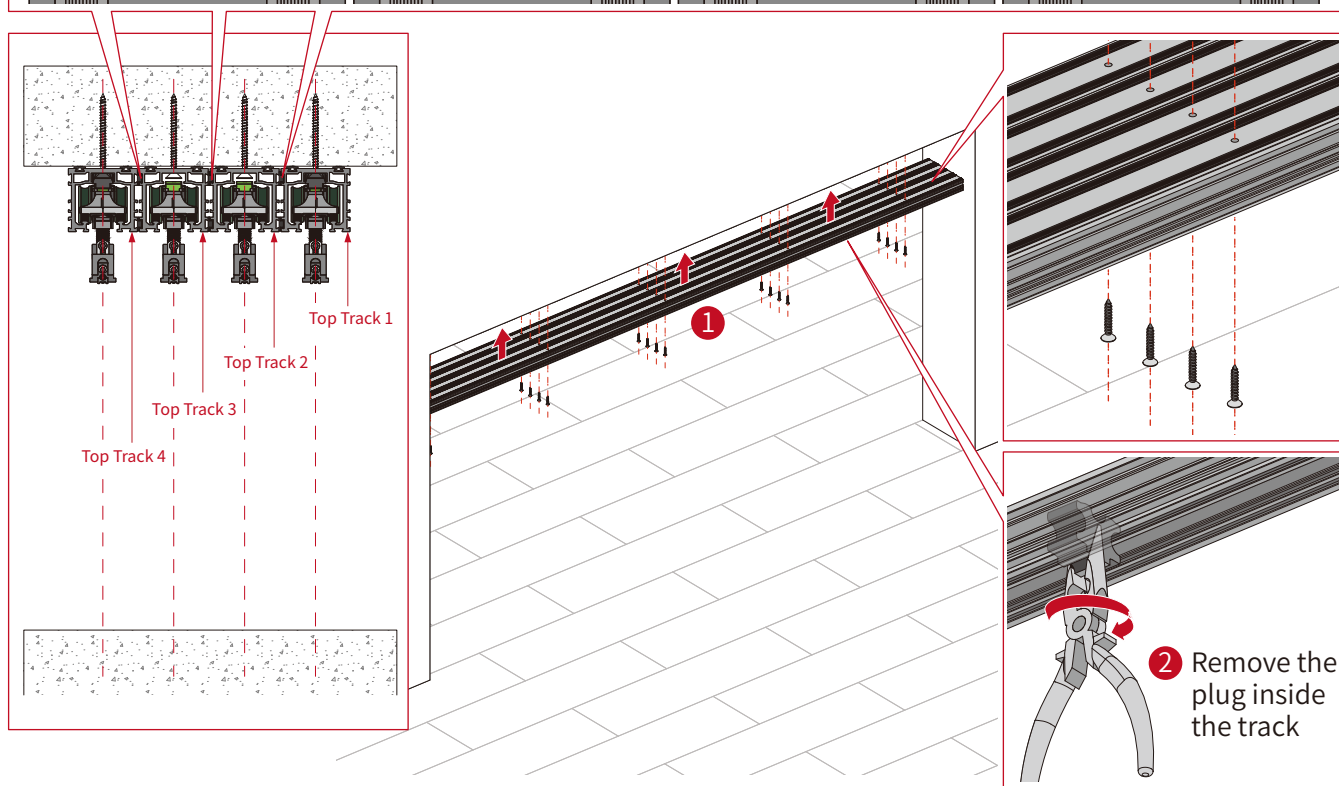
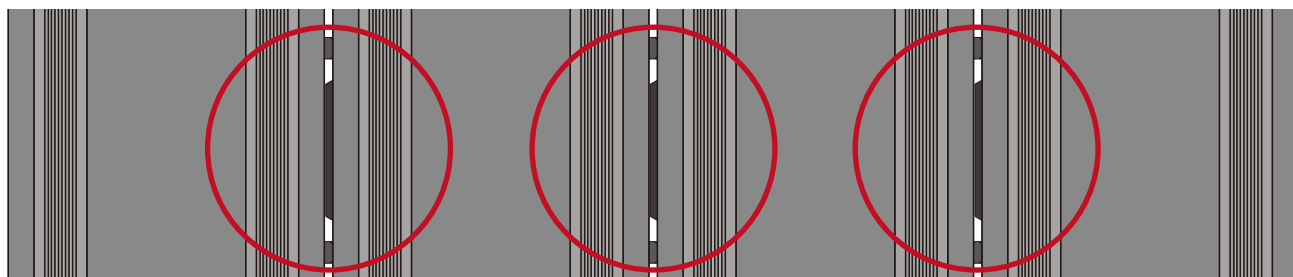


## 3 Install Rollers and Activators

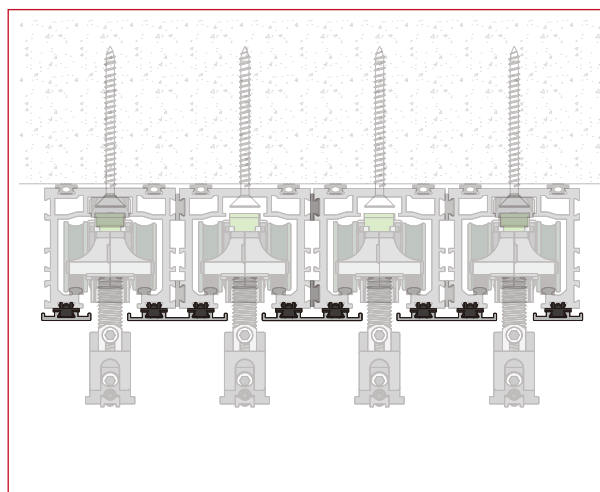
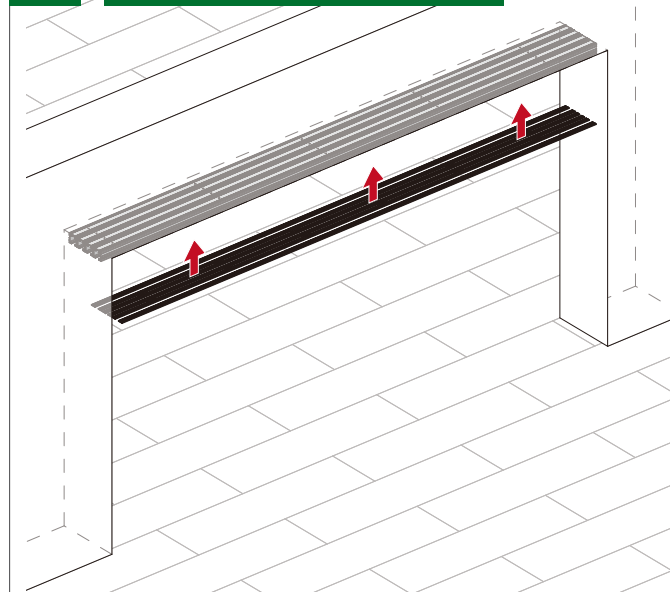


## 4 Install the Top Track

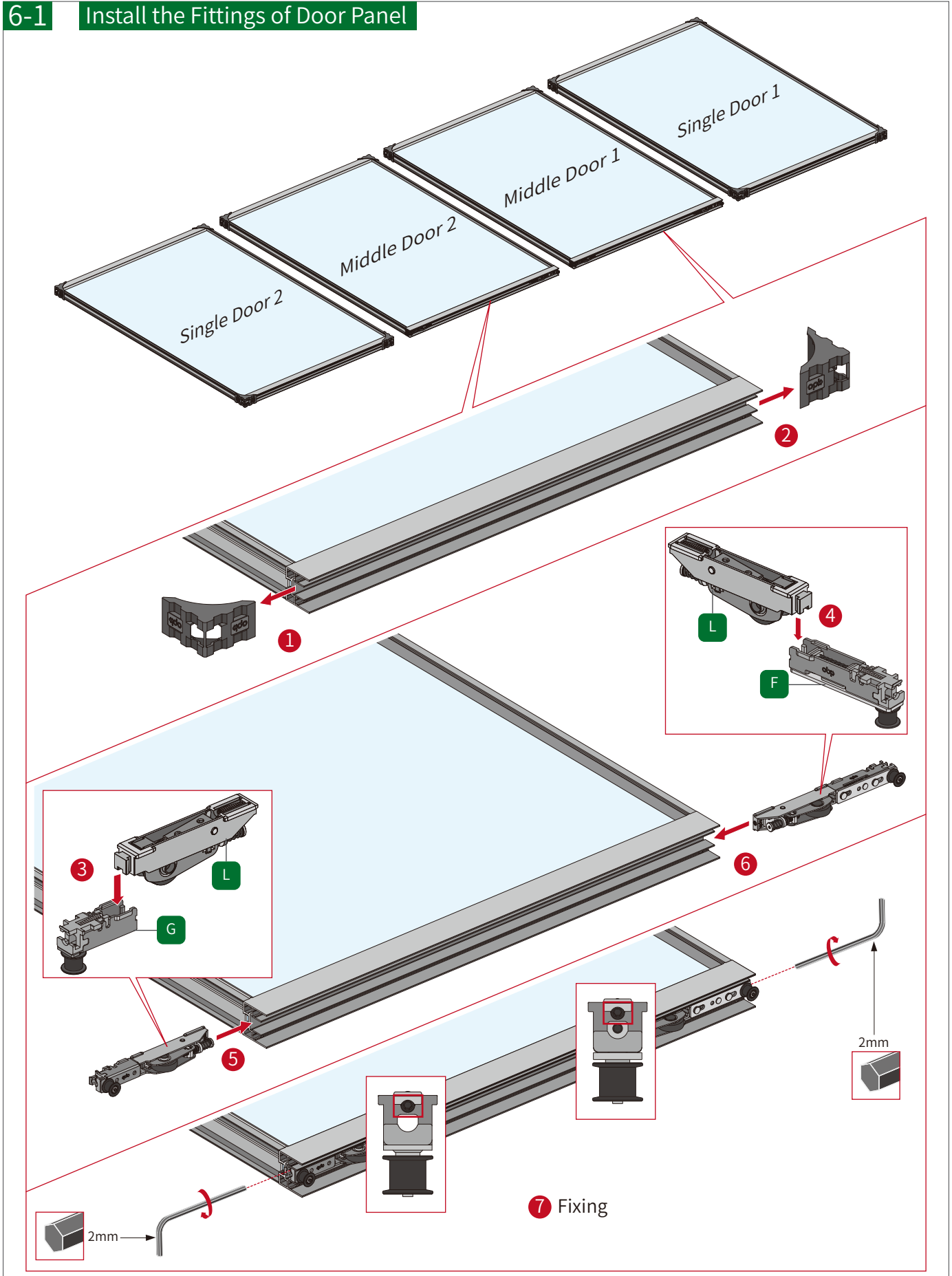
**! Must be tight! No gap is allowed!**



## 5 Install the Covers of Track

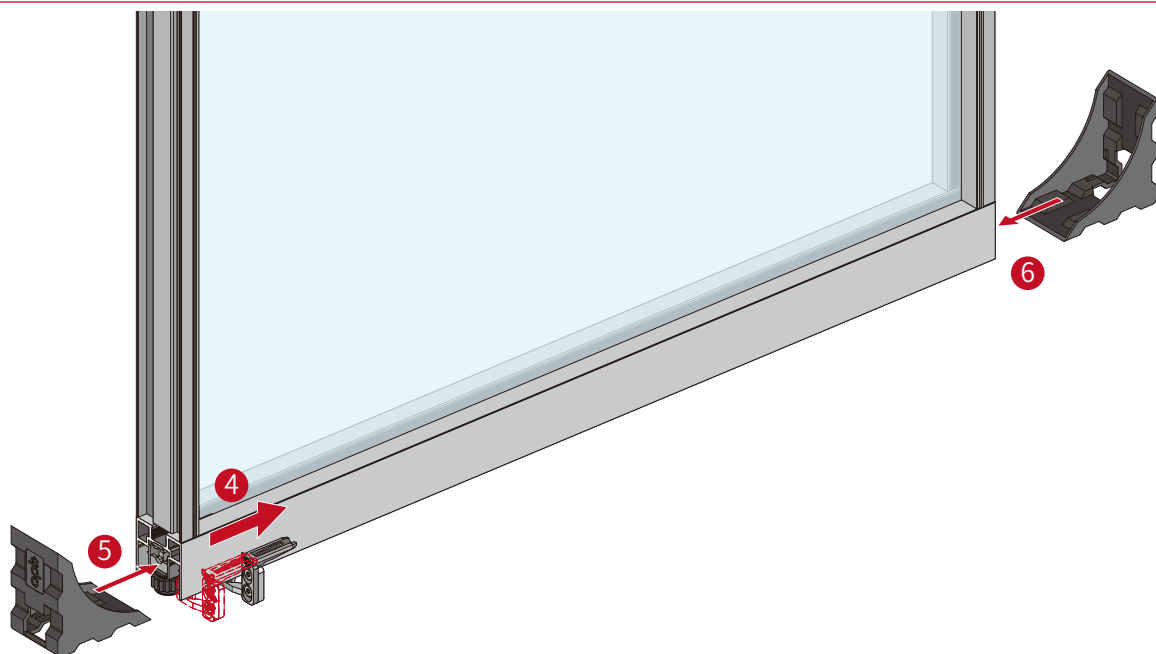
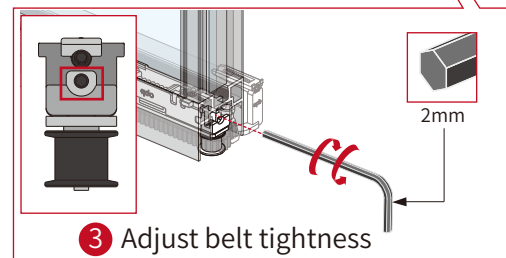
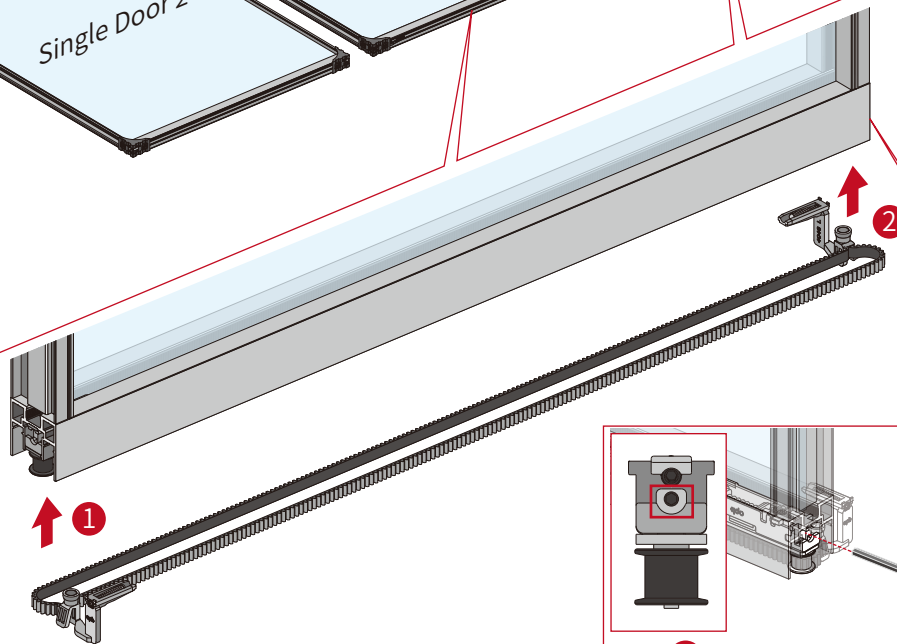
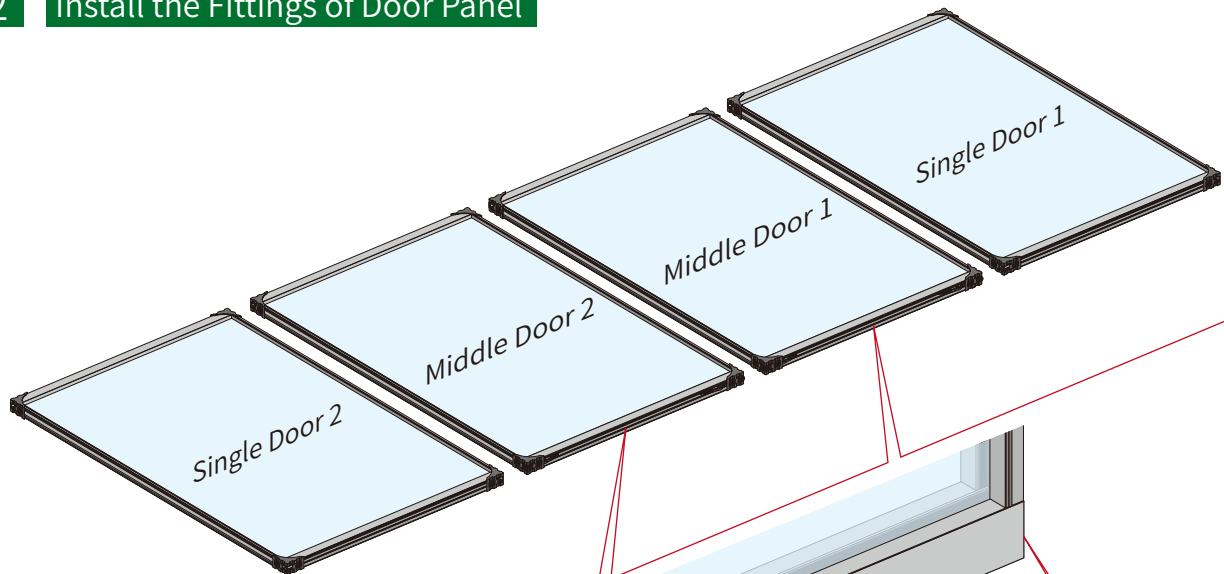


## 6-1 Install the Fittings of Door Panel

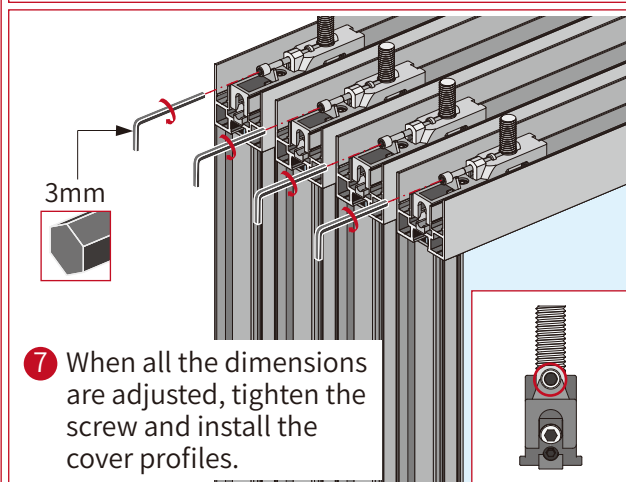
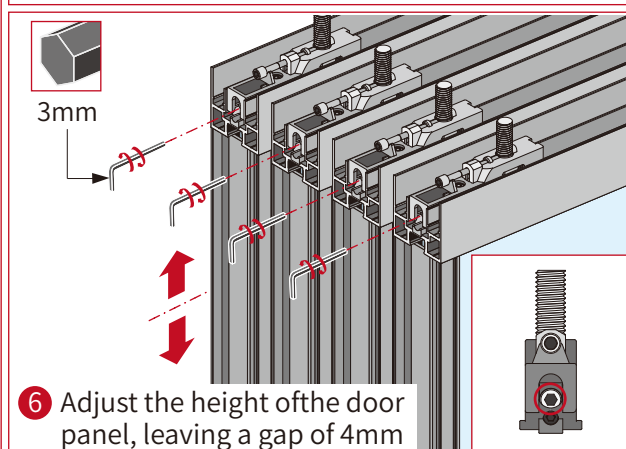
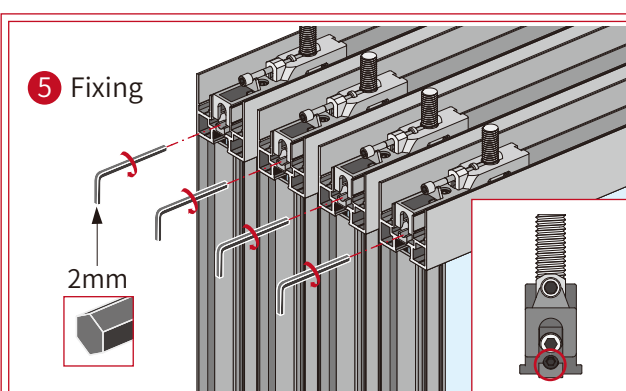
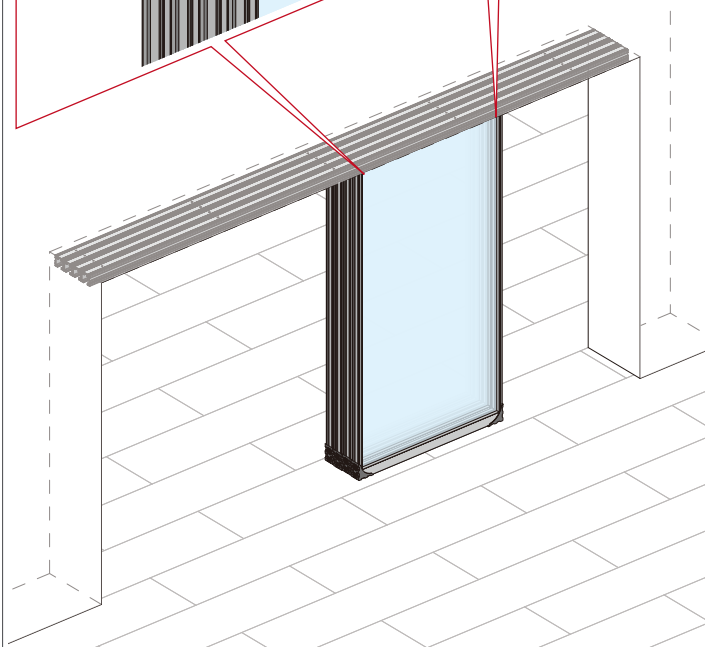
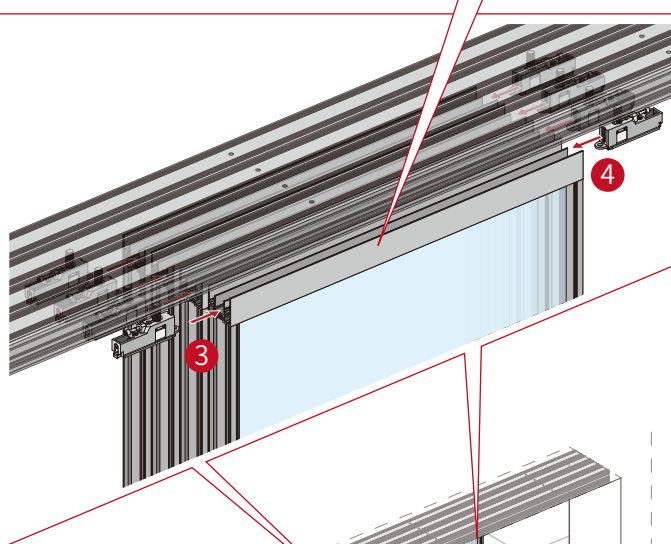
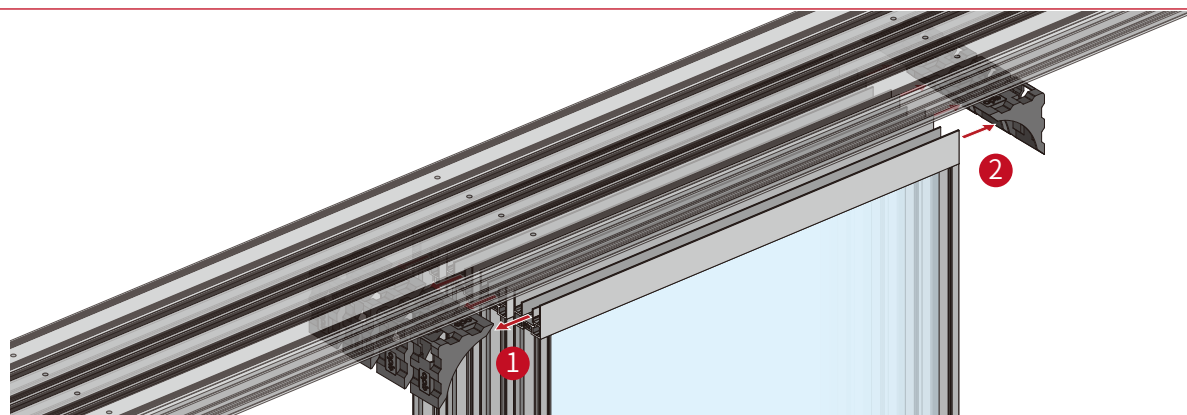




## 6-2 Install the Fittings of Door Panel



## 7 Install the Door Panel

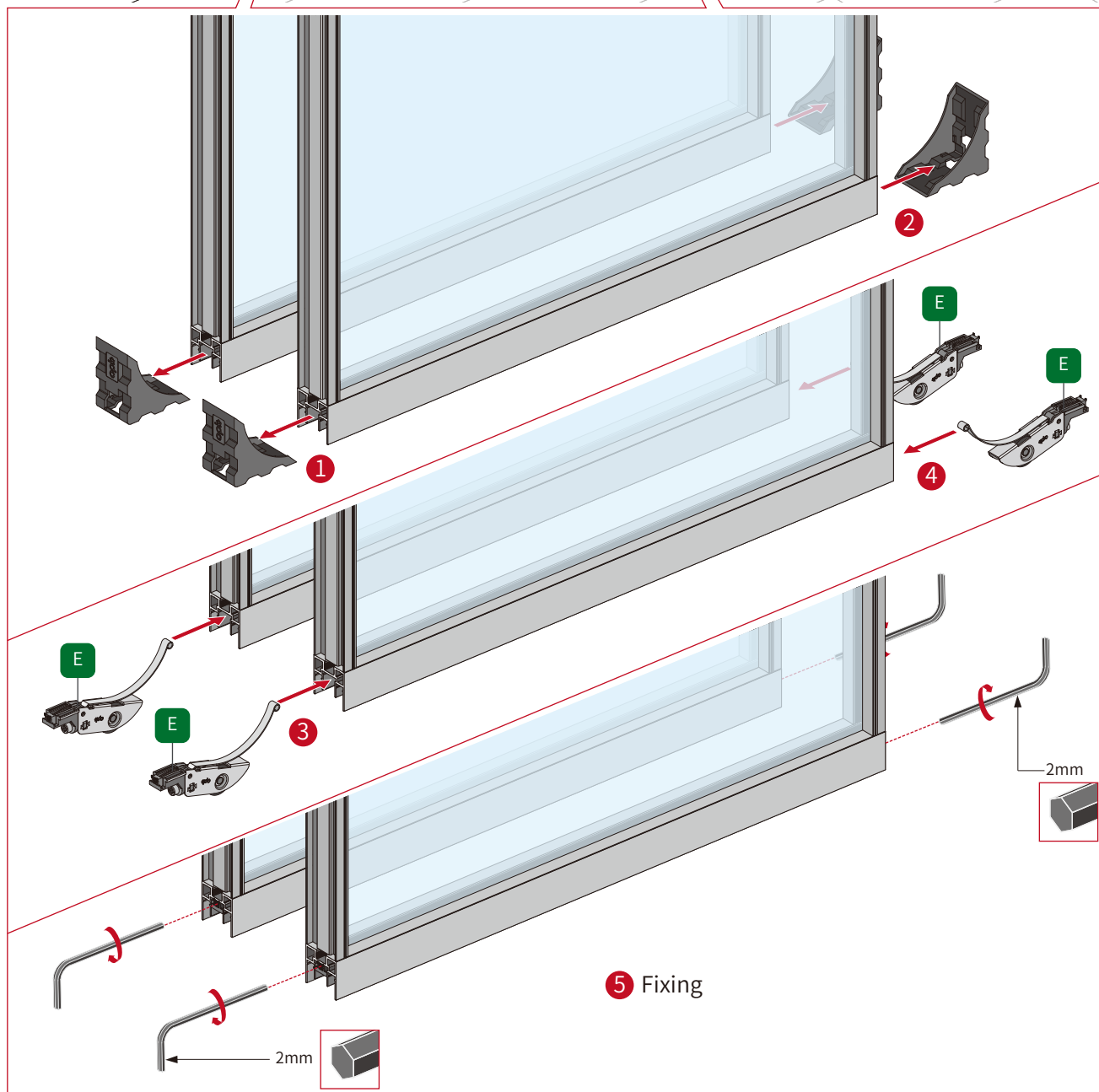




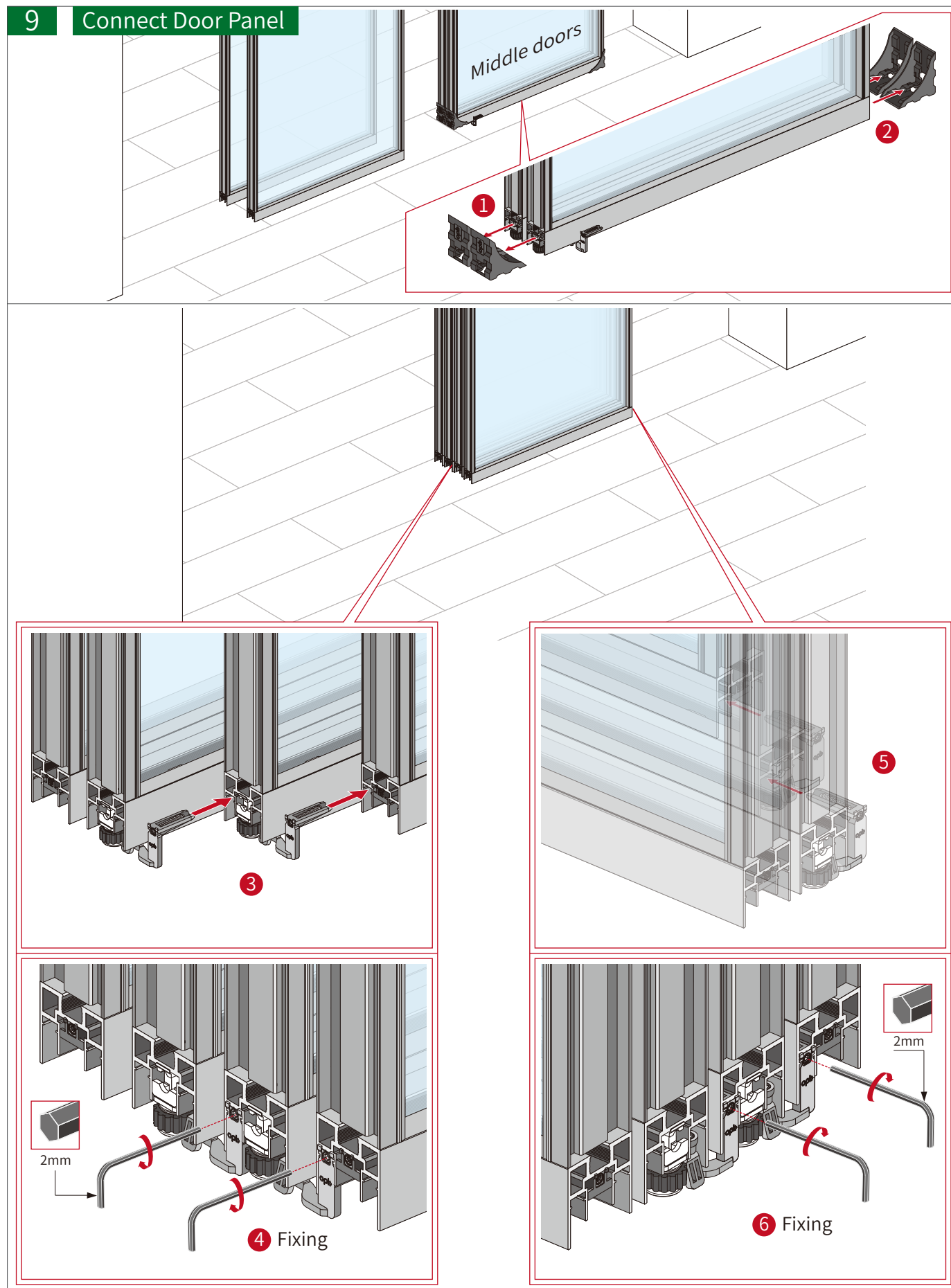
8

# Install the Fittings of Door Panel

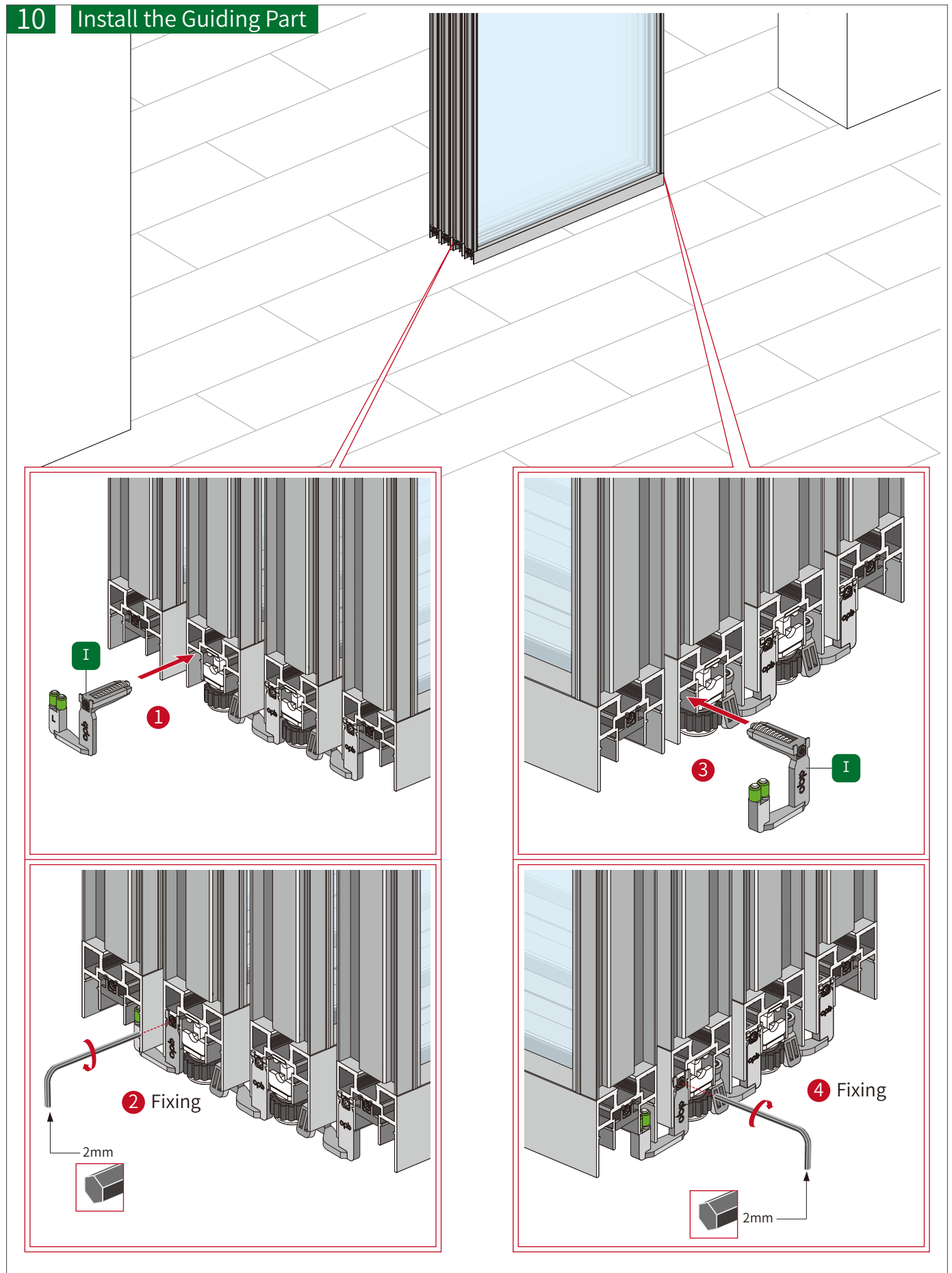
Middle doors



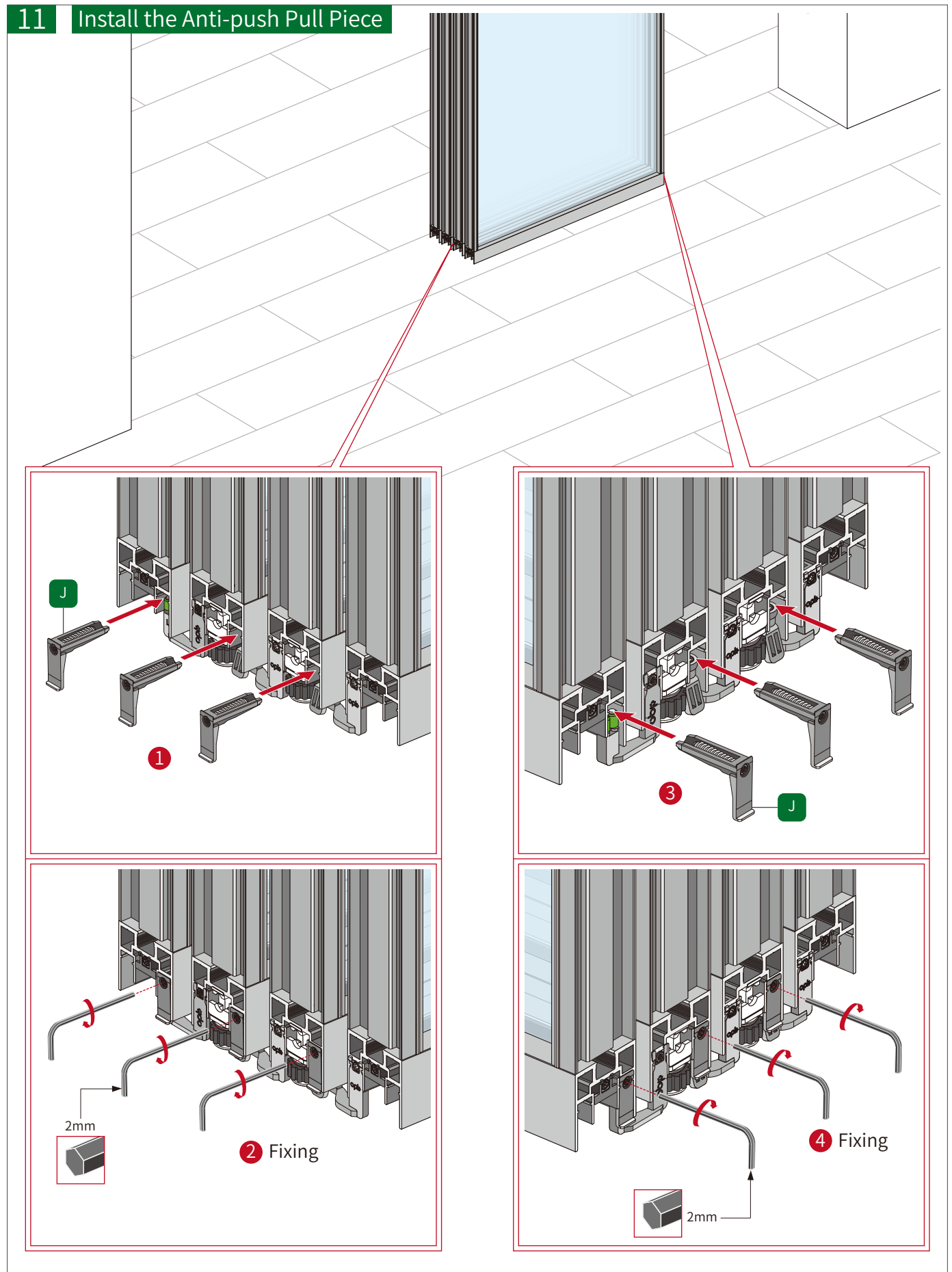
## 9 Connect Door Panel



## 10 Install the Guiding Part

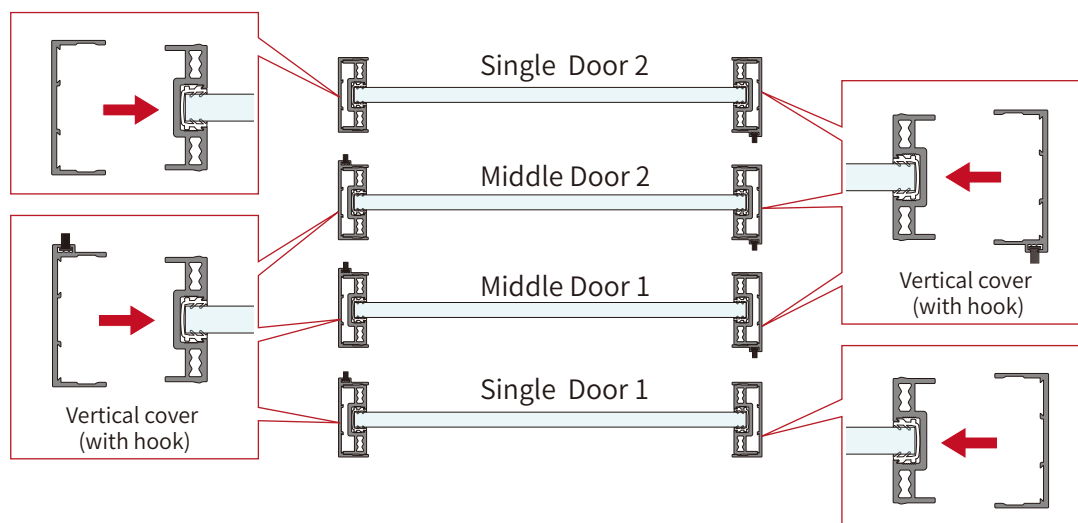


# 11 Install the Anti-push Pull Piece

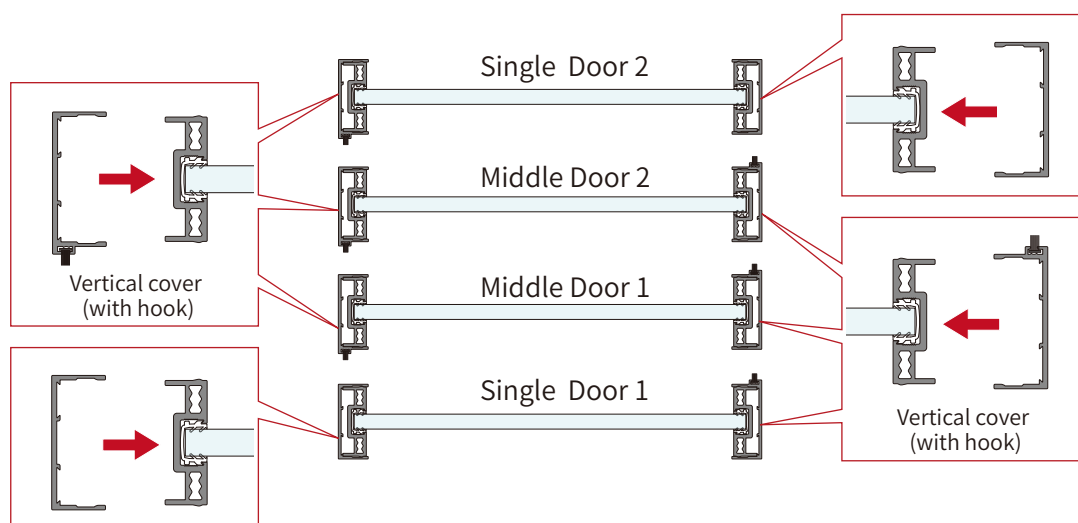


## 12 Install the Cover of Vertical Frame

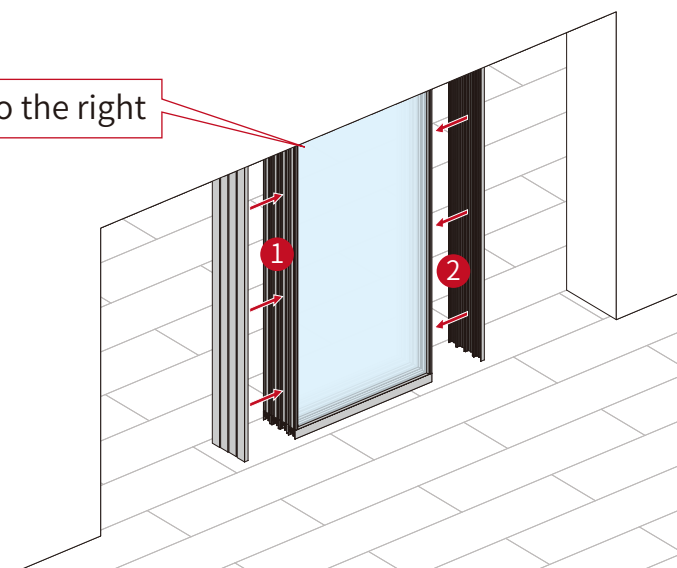
### Door opening to the left



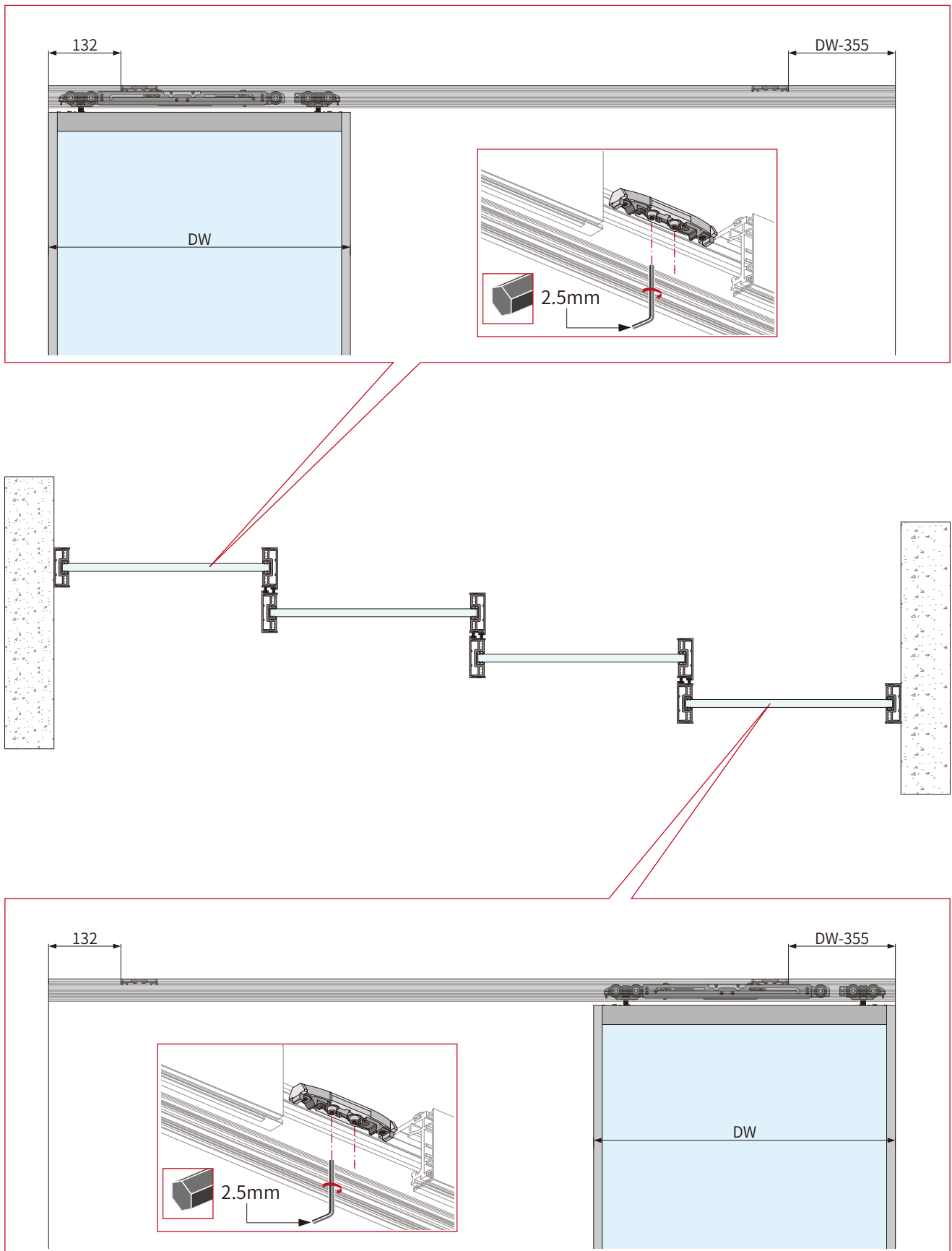
### Door opening to the right



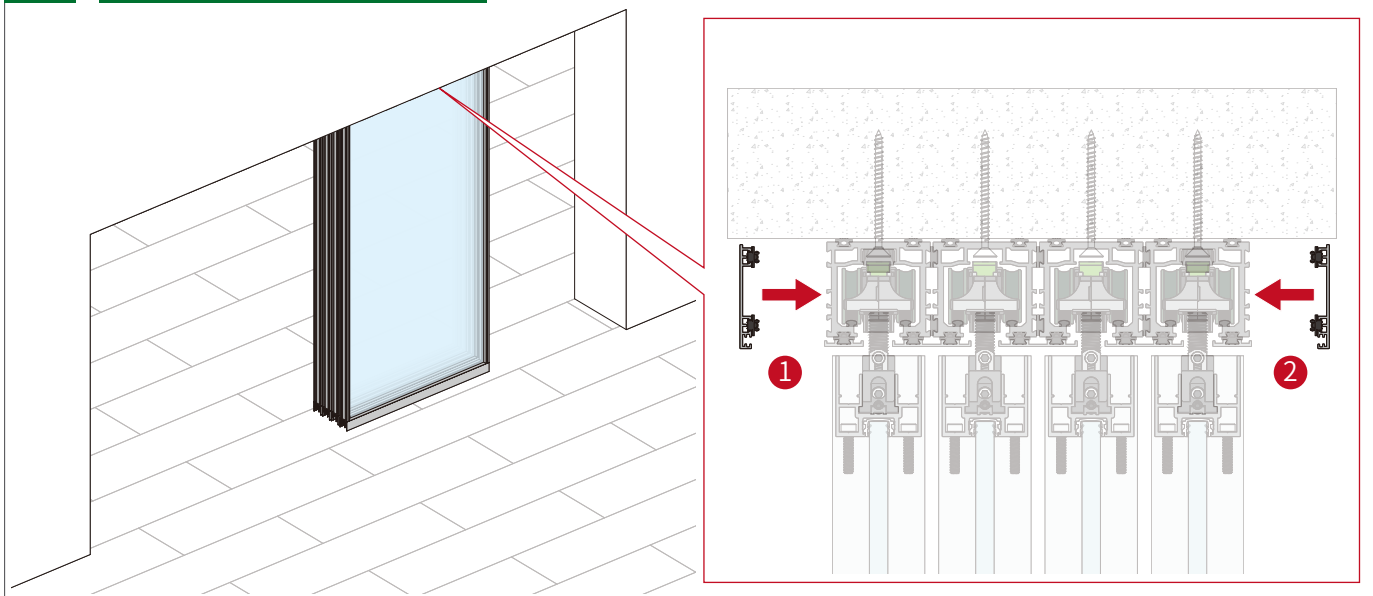
### Door opening to the right



## 13 Activator Position

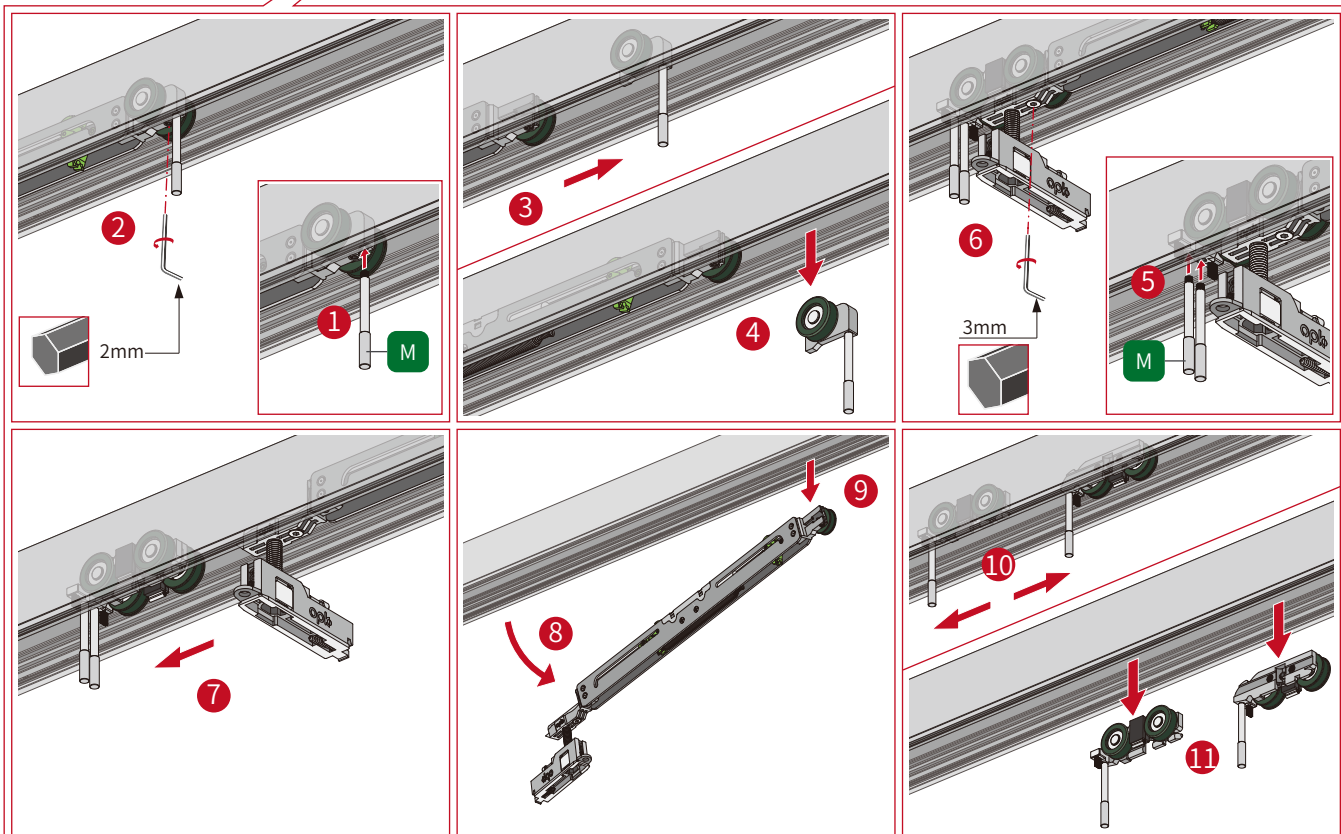
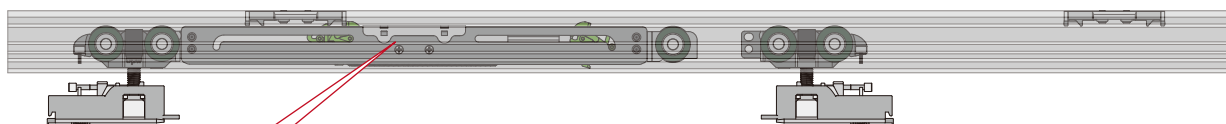


## 14 Install the Cover of Track



## Maintenance & Replacing

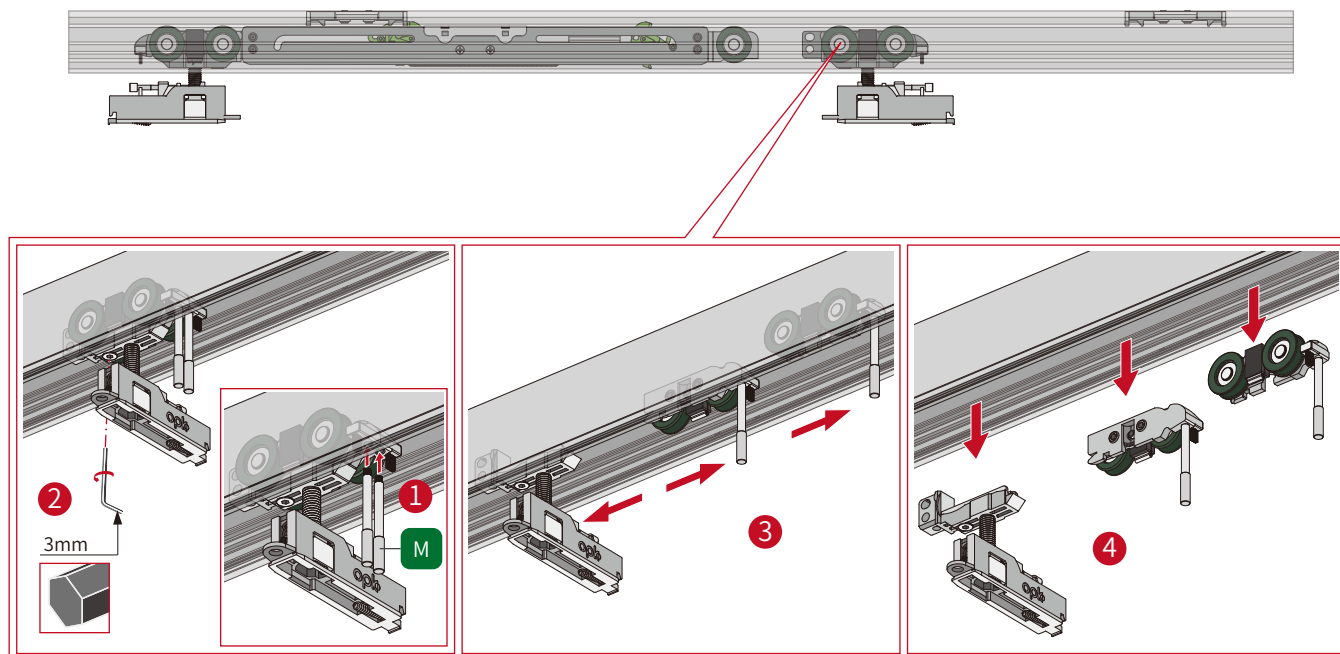
### Disassemble Running Part





## Maintenance & Replacing

### Disassemble Running Part



## Maintenance & Replacing

### Replacing Activator

